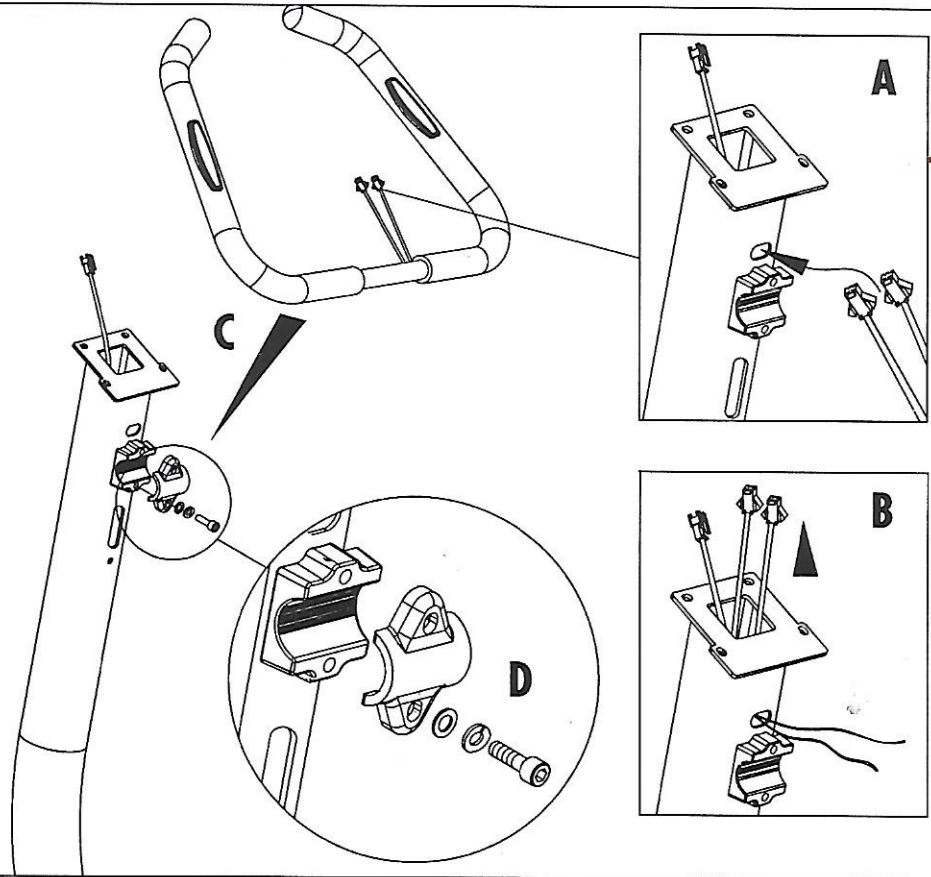
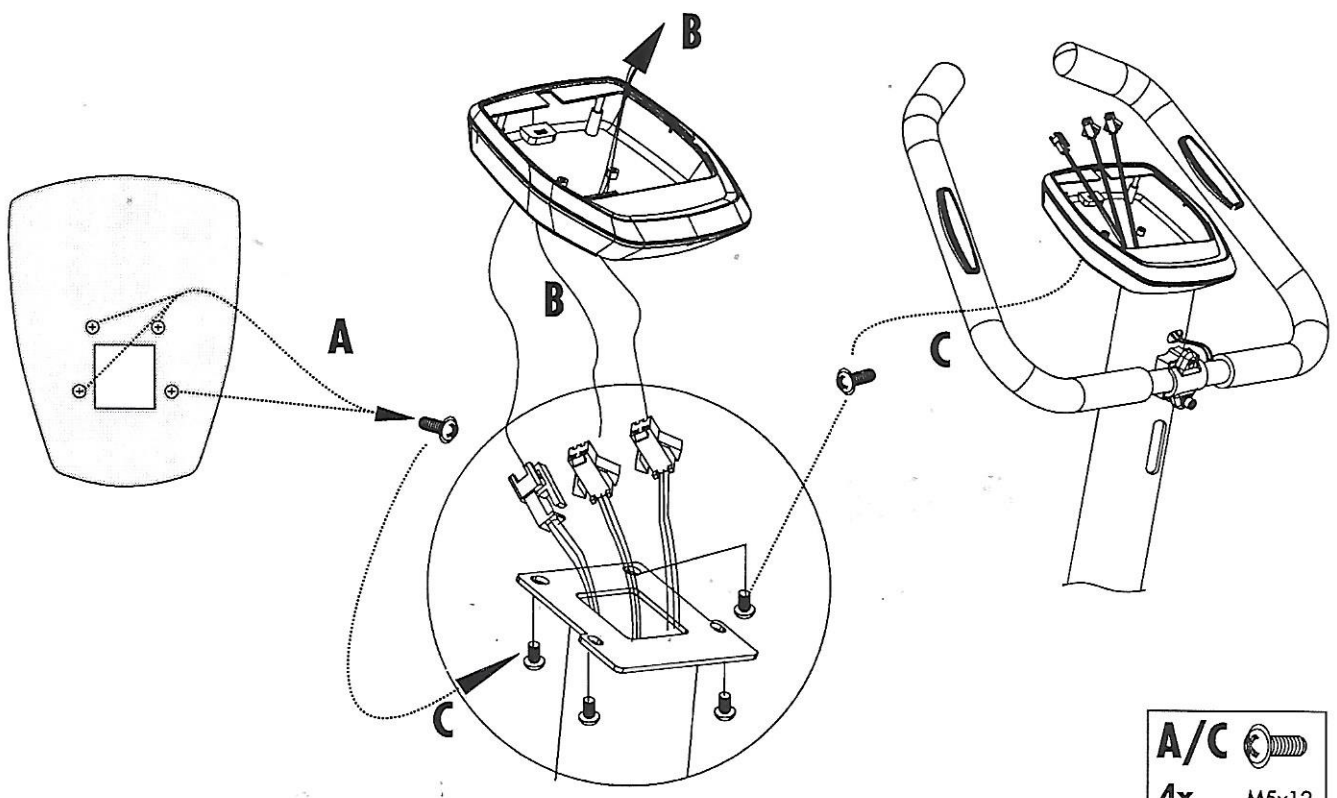


3

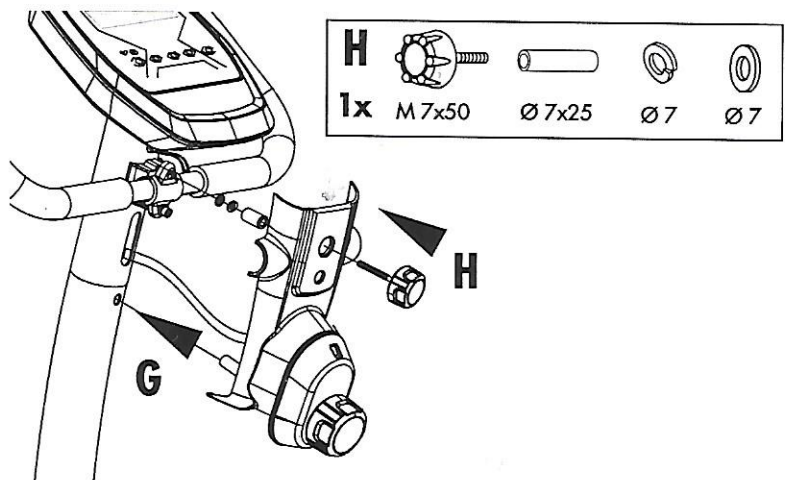
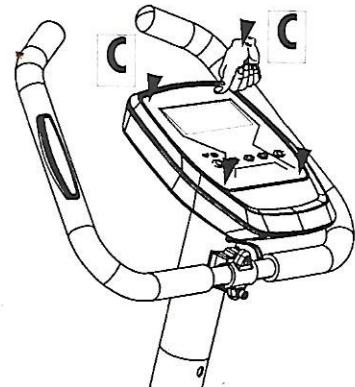
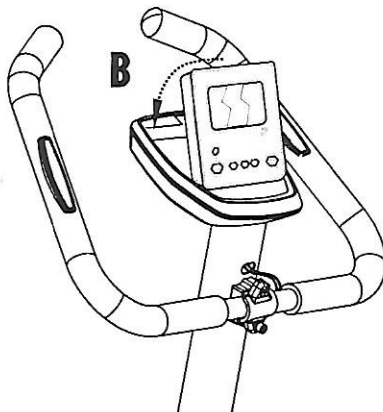
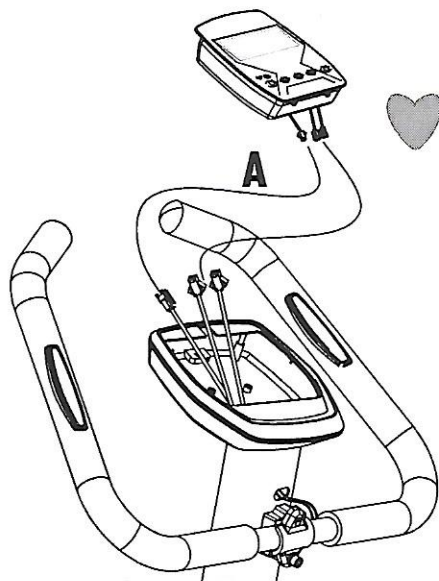


- 1x** M7x30
- Ø7**
- Ø7**

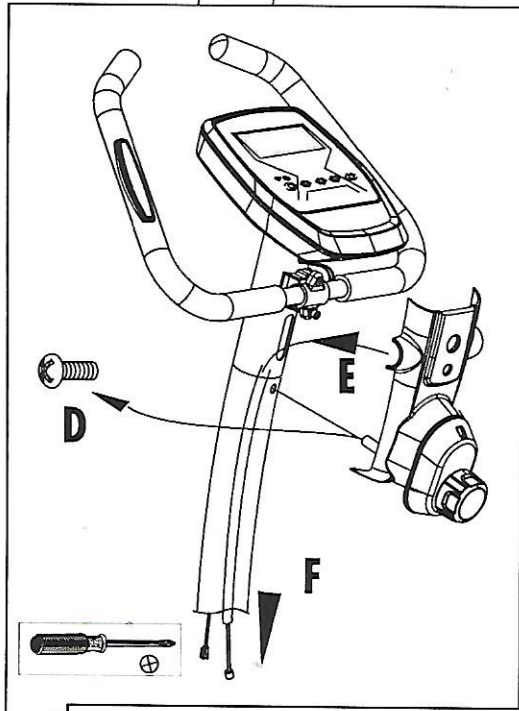
4



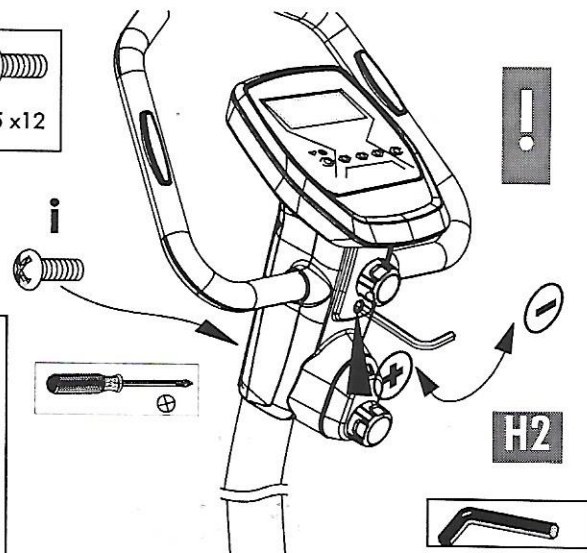
- A/C**
- 4x** M5x12



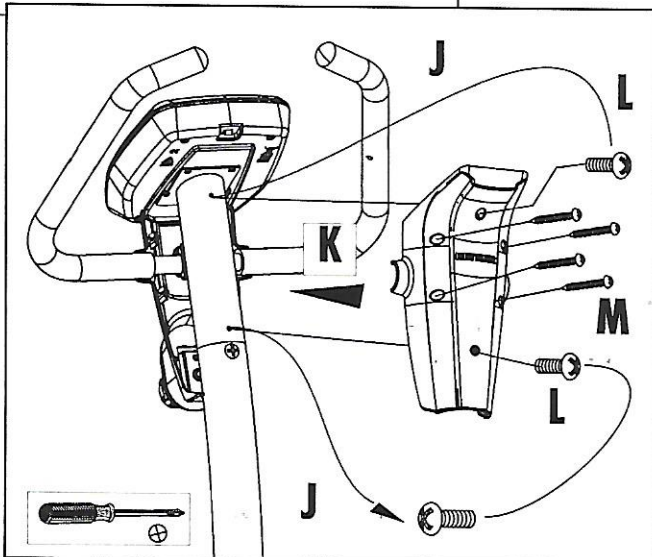
- H**
- 1x M7x50 Ø7x25 Ø7 Ø7



- D/i**
- 1x M5x12

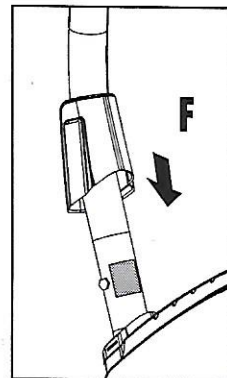
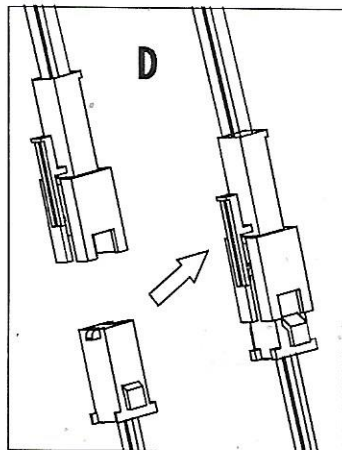
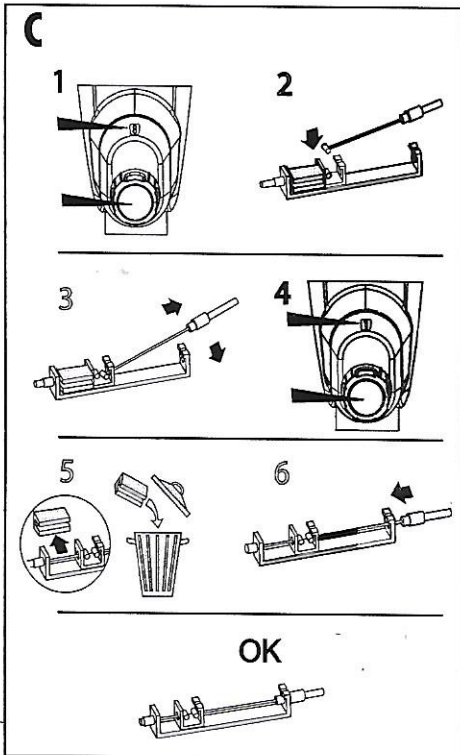
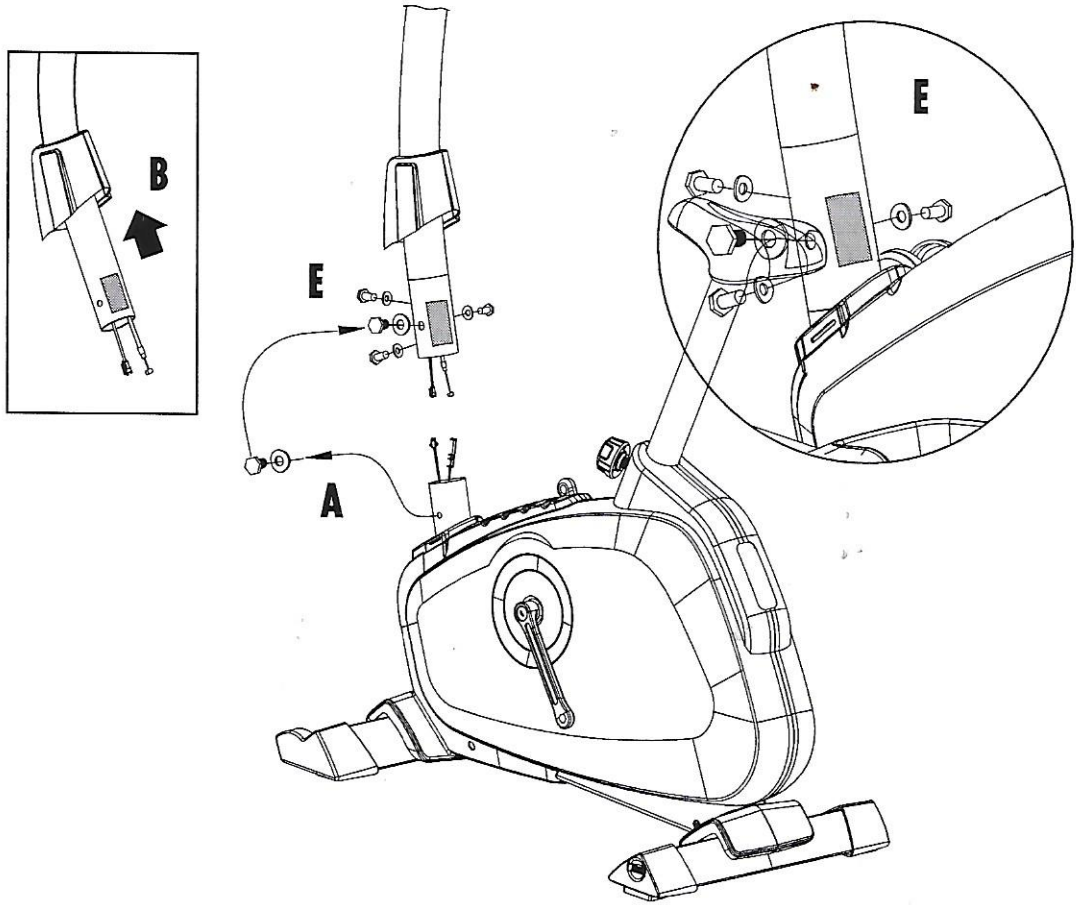



H2

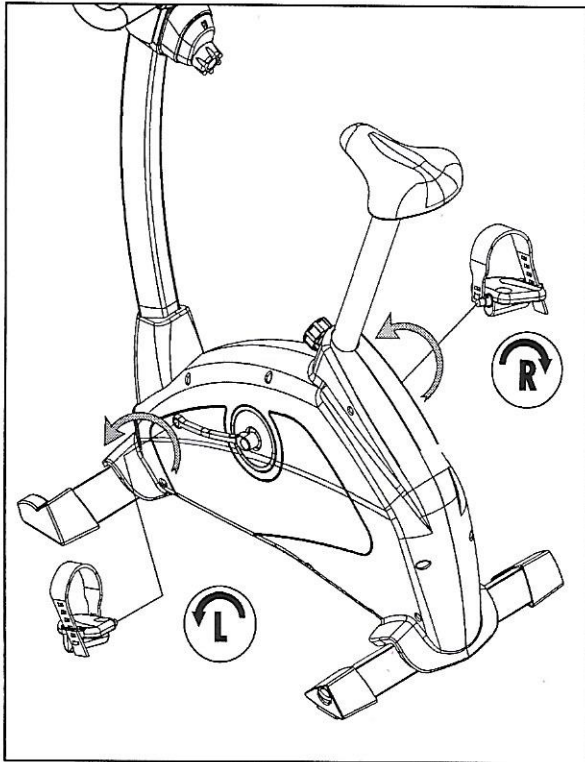
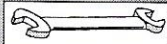


- J/L**
- 2x M5x14

- M**
- 4x 3x16



A/E 
6x M 8x20=25 Nm Ø 8x19



Handhabungshinweise

- GB - Handling
- F - Indication relative à la manipulation
- NL - Bedieningsinstructie
- E - Instrucciones de manejo
- I - Avvertenze per il maneggio

- PL - Wskazówki obsługowe
- P - Nota sobre o manuseamento
- DK - Håndtering
- CZ - ěPokyny k manipulaci

